

A photograph of an industrial facility, likely a power plant or refinery, featuring a complex network of large, white, insulated pipes supported by a dark metal framework. The ground is covered in gravel. The sky is blue with scattered white clouds. The pipes are arranged in a grid-like pattern, with some curving upwards and others running horizontally. The overall scene is industrial and well-maintained.

# ANR Monthly Customer Update

December 2020



# Agenda

---

## 1. Safety moment & TC Energy update

Catherine Szuhay

## 2. Storage update

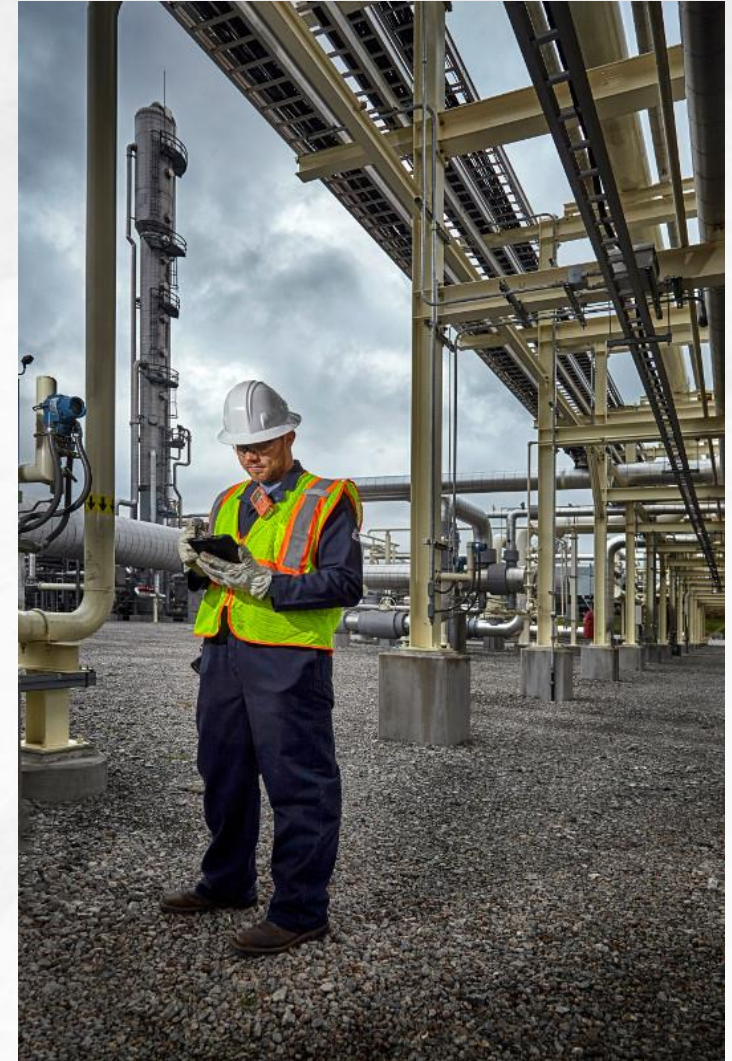
Jeffery Keck, Operations Planning

## 3. Operational / Power Desk update

Michael Gosselin, Operations Planning

## 4. Noms & Scheduling update

DeAnna Parsell, Noms & Scheduling





## Safety Moment

### Holiday safety

- Make sure ladder is stable when hanging lights and decorations
- Unplug Christmas lights when leaving the room or going to bed
- Use the proper string lights for indoor or outdoor use
- Water your Christmas tree daily; a dry tree is a fire hazard
- Keep candles away from flammable objects and blow them out before leaving the room



Spruce up your holiday safety!

houston   
**foodbank**

**CALGARY  
FOOD BANK**

**+ C IFRC**

**FEEDING  
AMERICA**



## TC Energy redirects funds this holiday season

TC Energy donated more than

**\$1 million**

to support non-profit organizations  
this holiday season.

To learn more about TC Energy's  
giving efforts throughout 2020,  
visit [tcenergy.com/media](https://tcenergy.com/media)

*(Select the "TC Energy redirects holiday party funds  
to support non-profits this holiday season" release)*

**"Early in the pandemic, we recognized the immense challenges that were ahead in the communities where we live and work. As a company, we were quick to identify that we have an important role to play in supporting non-profit organizations in a meaningful way. We are proud to partner with organizations to help build community resilience, capacity and support during these challenging times."**

**- Russ Girling**



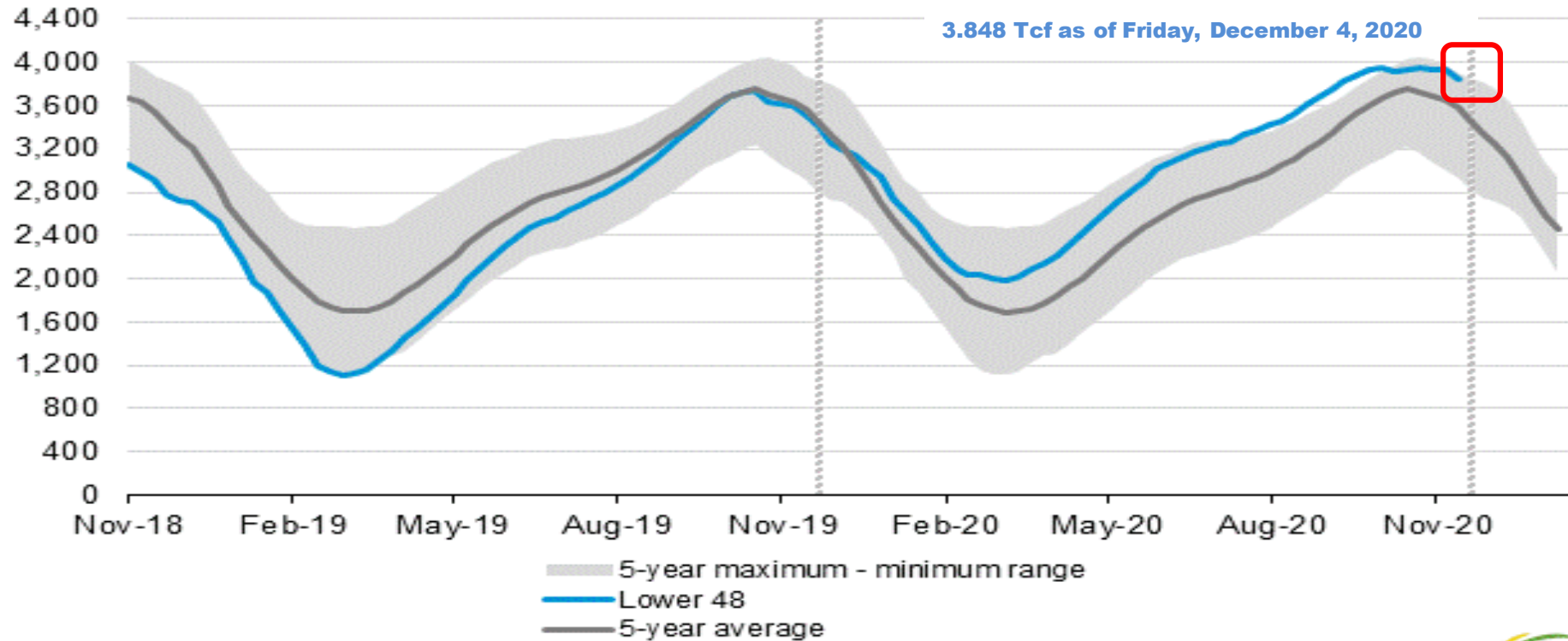
Storage update

Jeffery Keck – Operations Planning

# EIA storage position: The big picture

Working gas in underground storage compared with the 5-year maximum and minimum

billion cubic feet



Source: U.S. Energy Information Administration

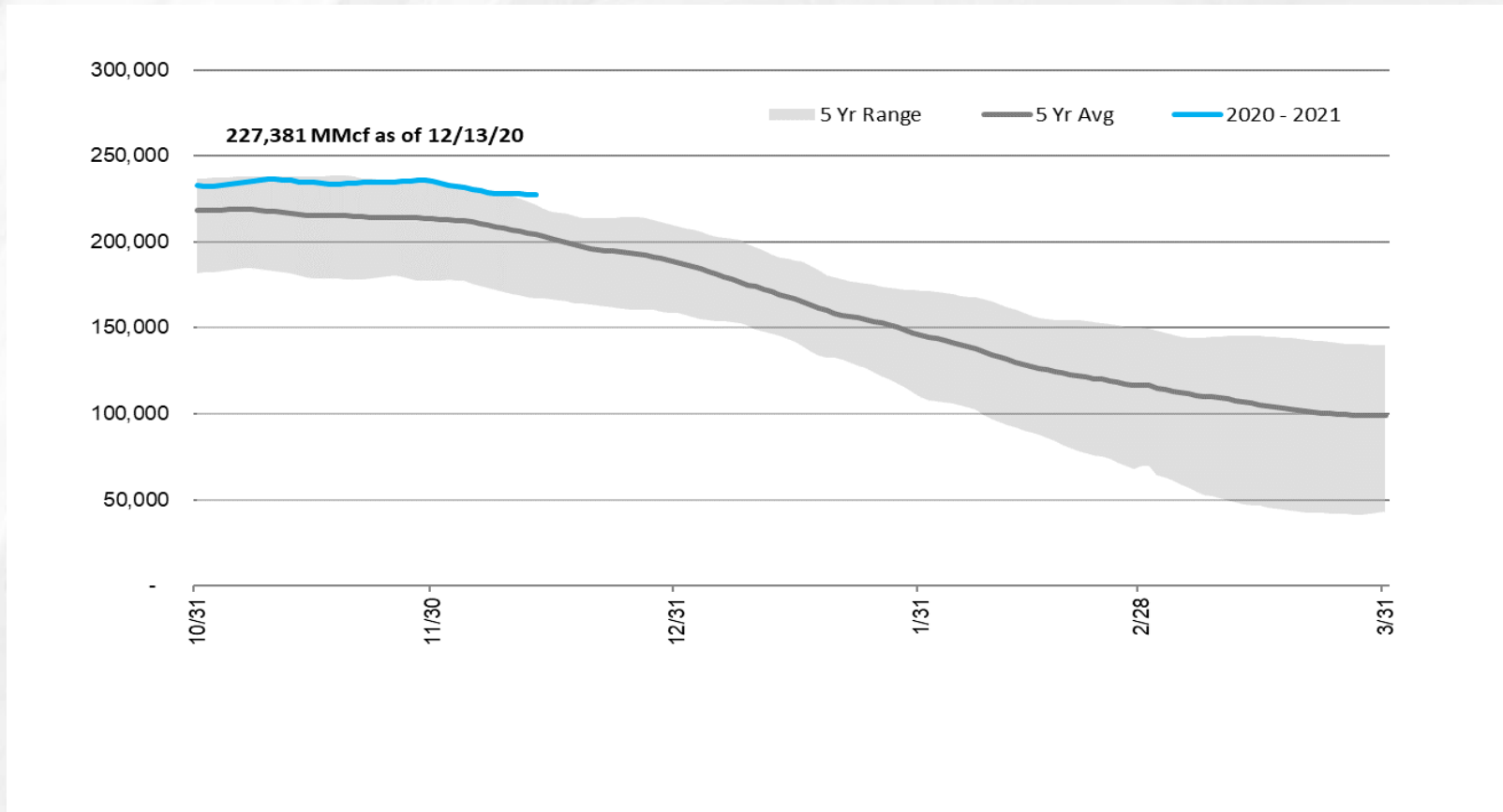


390  
bcf  
*than December 2019*

260  
bcf  
*above the  
five-year average*

# Storage position

*Working gas in underground storage compared with the five-year maximum and minimum*



**19**  
bcf  
*than December 2019*

**23**  
bcf  
*above the  
five-year average*

# Storage operations

---

- From Nov. 15 – Dec. 13, storage activity averaged a withdrawal of 252-MMcf/d. Daily activity varied from a withdrawal of 1.2-Bcf/d to an injection as high as 500-MMcf/d.
- ANR has met all firm customer demand for storage activity on both injection and withdrawal.
- Capacity is 90 percent full roughly six weeks into the withdrawal season.
- There are currently no postings restricting storage activity.
  - Storage activity is expected to range from light to moderate withdrawals over the next few weeks. Current projections show the potential for higher withdrawals toward the end of the year.





# Storage operations

---

- Most planned maintenance has been completed for the year in the storage area. All fall shut-ins for well tests at storage fields will be completed in the next week. As a result, withdrawal capability has been steadily increasing and available capacity will continue to be reflected on the EBB under the operationally available capacity.
  - The available capacity as a result of this activity will be reflected on the EBB under the operationally available capacity.
- With storage capacity still at a high level, withdrawal capacity is in good shape to meet customer demand. Injection capacity is more limited, but should be sufficient to handle any firm late season injections.
- ANR is confident that it is positioned well to meet customer demand for both injection and withdrawal heading further into the winter season.

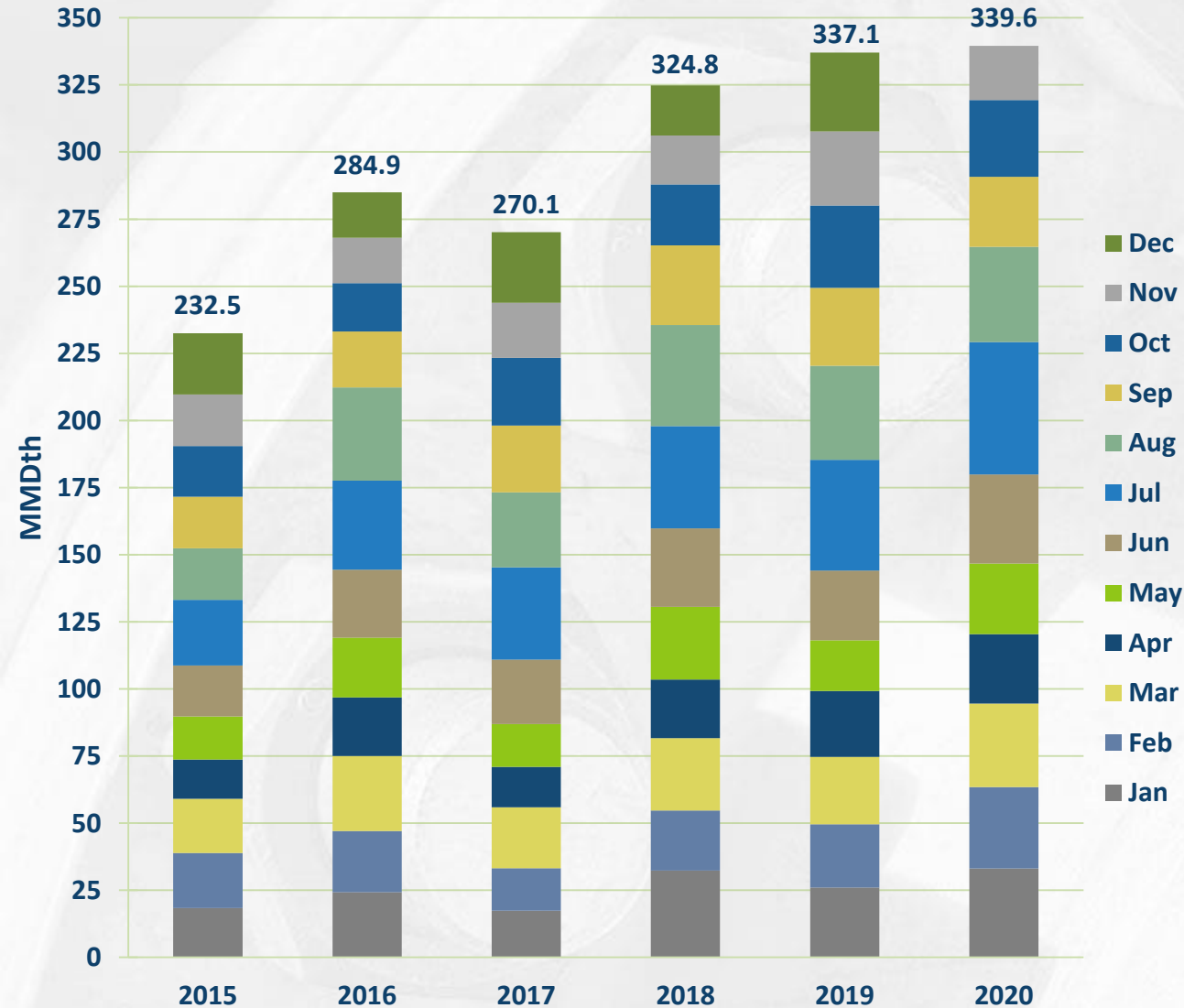


Operational update

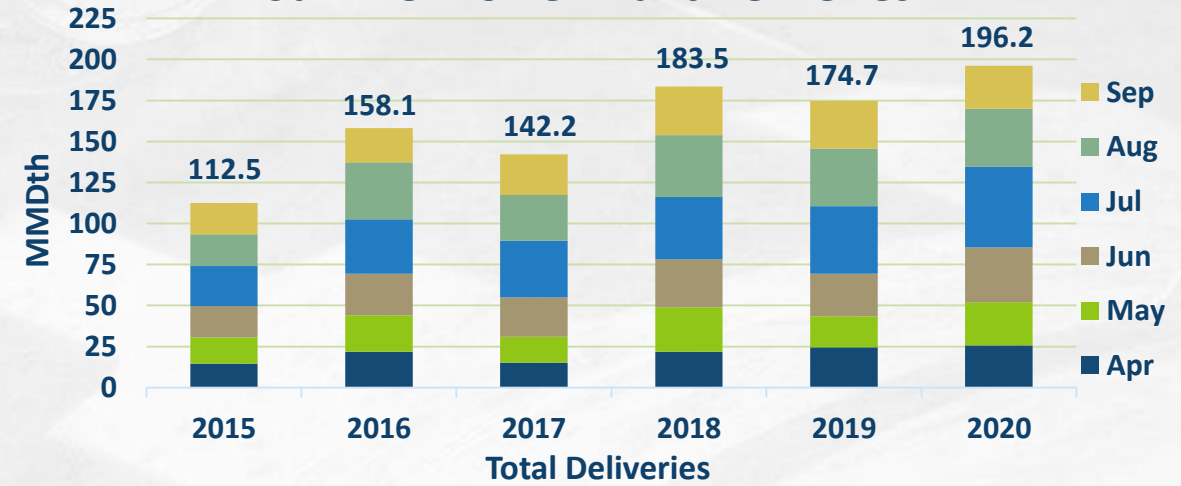
Michael Gosselin – Operations Planning

# Monthly deliveries to Power Plants

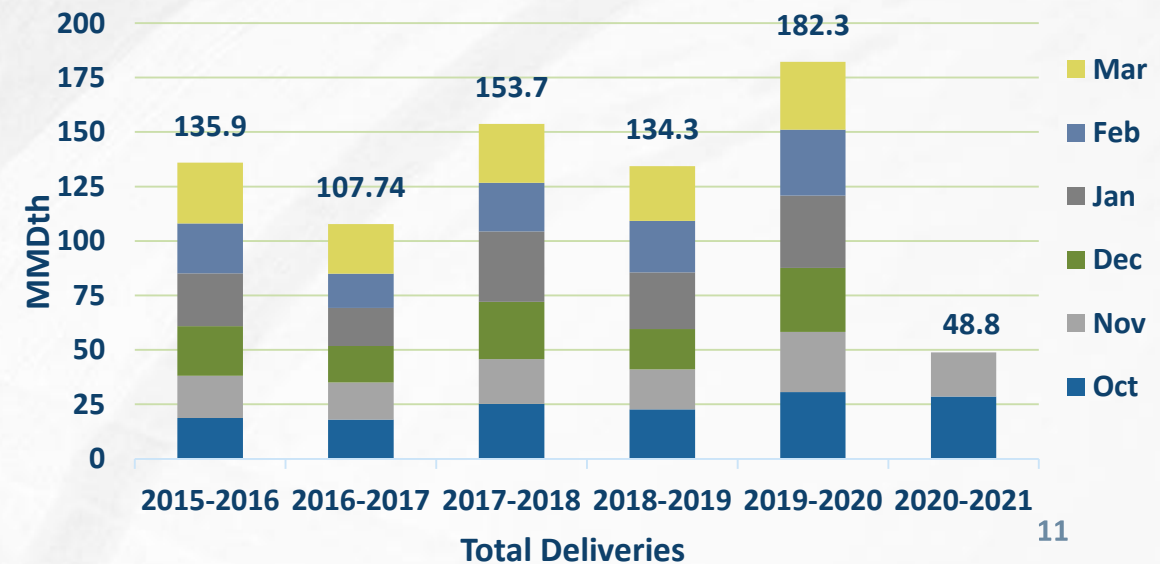
## Total Monthly Power Plant Deliveries



## Summer Power Plant Deliveries



## Winter Power Plant Deliveries



# Capacity impacts

Dates	Area/Segment/Location	Cap (MMcf/d)		December																												January																																	
		Impact	Avail	14	15	16	17	18	19	20	21	22	23	24	25	26	27	28	29	30	31	1	2	3	4	5	6	7	8	9	10	11	12	13	14	15	16	17	18	19	20	21	22	23	24	25	26	27	28	29	30	31													
<b>Market Area &amp; Storage</b>				No Impacts																																																													
<b>Southwest Area &amp; Mainline</b>				<b>Roberts CO NO 1 Del (LOC# 736566)</b> 12/1 - 12/29    Incompatible Pressure    200    Shut In																																																													
<b>Southeast Area</b>				<b>Multiple Meters - Cameron Area</b> 12/2 - 3/1/21    Pipeline Maintenance    N/A    Shut In <b>SHADYSIDE/TGP (REC) (LOC #467239)</b> 12/2 - 12/29    Incompatible Pressure    190    Shut In <b>Pine Prairie North DEL (LOC #490941)</b> 12/2 - 12/29    Incompatible Pressure & Integrity Work    247    Shut In <b>Pine Prairie South DEL (LOC #766185)</b> 12/10 - 12/23    Integrity Work & Eunice CS Upgrades    19    28 <b>Eunice Total Location (LOC #505592)</b> 12/13 - 12/16    Eunice CS - Unit 'B' Valve Replacement    226    950 12/17 - 12/23    Eunice CS - Station Upgrades    226    950 1/11 - 1/24    Eunice CS - Station Upgrades    226    950    Tentative																																																													
<b>Southeast Mainline</b>				<b>Delhi Southbound (LOC# 1379345)</b> 12/10 - 12/17    Sardis CS - Valve Inspections & Turbine Repairs    94    990																																																													

# Outage postings

---

- Service impacts are estimates. Actual nominations, markets, weather and pipeline conditions determine any level of curtailments.
- Projects may be added, altered, delayed or cancelled. Emergent work cannot be planned and will happen from time to time.
- Notice of such planned work, including additions or changes, will be provided via a posting under the Planned Service Outage (PSO) category in GEMS. Emergent work will be posted under the Critical Notice category as soon as possible.





Nominations & Scheduling update  
DeAnna Parsell – Noms and Scheduling

# ANRPL Storage – reminder

---

- ANRPL Storage location 153808 makes capacity cuts similar to other locations, cutting first by priority, followed by rate and then rank.
- In order for ranks to be applied, nominations must be on the same contract
- If there is more than one nomination on a single contract ranked equally, the cut volume will be prorated amongst the nominations.
- This is applicable to both injection and withdraw nominations

# Postings – reminders

---

## **Critical Notice #10055 – ANRPL Transporter’s Use Update in Docket RP19-741**

- ANRPL’s proposal was accepted on December 7, 2020, and is effective January 1, 2021.
- To provide customers with adequate time to plan for January 2021 business, ANR has updated the GEMS system with Transporters' Use rates, which includes the Refund Surcharge. Shippers may now submit nominations for January 1, 2021, and forward.
- All documents related to this topic can be found on the FERC’s website under Docket RP19-741.

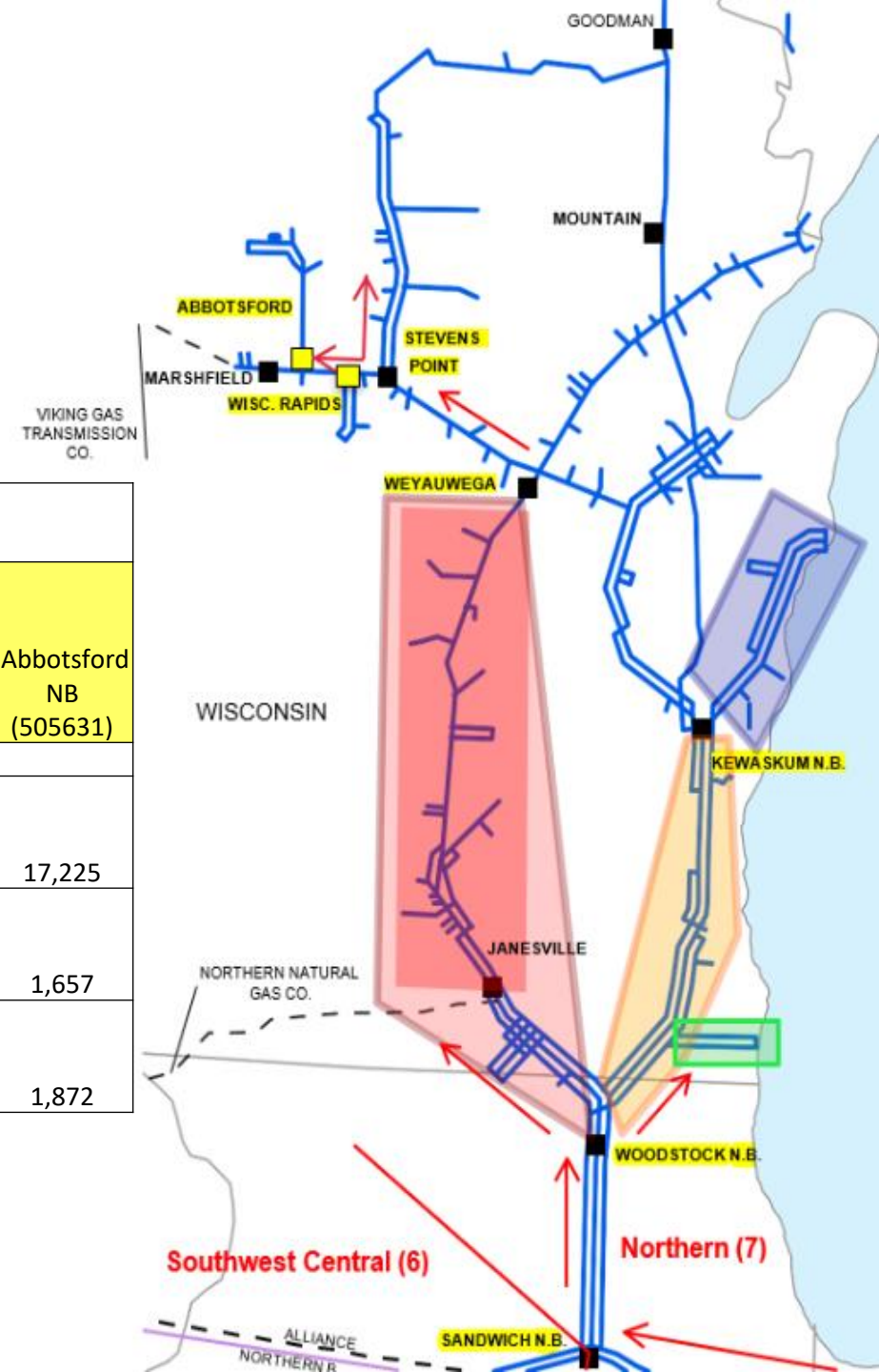
## **Non Critical Notice #10035 – ANR Pipeline DSP and UOS Penalty Waivers**

- Effective December 1, 2020, ANR Pipeline will waive penalty dollars associated with Daily Scheduling Penalties when the cumulative monthly infraction is less than 3,000 Dth per contract. Likewise, ANR will waive penalty dollars associated with Unauthorized Overrun Service penalties when the cumulative monthly infractions is less than 3,000 Dth per contract.

*\*ANR reserves the right to remove or modify these waivers at any time*



# Control Area highlight: Wisconsin November volumes



	Capacity Groups					Flow Thru Constraints						
	Two Rivers Lateral (261195)	Madison Lateral (261192)	Madison North Lateral (438672)	Milwaukee Group (505621)	Racine Lateral (505622)	Sandwich NB (359925)	Woodstock NB (226636)	Kewaskum NB (226758)	Weyawega WB (505618)	Stevens Point WB (505635)	Wisconsin Rapids SB (505632)	Abbotsford NB (505631)
OP QTY	101,639	552,360	306,356	333,219	113,714	2,283,610	1,947,805	1,266,554	376,262	279,821	59,261	17,225
Nov AVG	21,222	140,631	94,276	232,397	24,451	955,884	874,494	486,238	29,406	16,496	28,404	1,657
Nov MAX	45,732	284,190	179,431	333,014	37,833	1,412,784	1,362,767	737,079	56,405	41,590	39,724	1,872

*\*Anr reserves the right to change location capacities at any time due to operational system conditions*

# ANR customer assistance

---

For customer assistance concerning scheduling priorities, firm service rights and features, GEMS new user training, virtual and face-to-face meetings, etc., please contact the ANR Noms & Scheduling Team:

**Toll Free:** 1-800-827-5267

**Group Email:** [ANR\\_Noms\\_Scheduling@tcenergy.com](mailto:ANR_Noms_Scheduling@tcenergy.com)

**Web address for the ANRPL Tariff:** [ebb.anrpl.com](http://ebb.anrpl.com)

Questions



US\$ 0.8	0.2	
US\$ 0.7	0.3	
US\$ 0.6	0.4	
US\$ 0.5	0.5	
US\$ 0.4	0.6	
US\$ 0.3	0.7	
US\$ 0.2	0.8	
US\$ 0.1	0.9	
US\$ 0.0	1.0	
Total Conversion Expenses		14.2